

## The Elma Centennial

Elma has finally reached its 100th birthday. The planning for this celebration began in 1984, although ideas had been pondered earlier.

Our "kick-off" activity was in August of 1985. A Car Show was held in our Elma Park. A pork barbecue was the feast of the day. In the afternoon, a balloon lift-off in the ball diamond sent 100 centennial balloons in a multitude of colors floating into the skies above Elma.

Some of the young people in Elma worked for hours to make a float for Cresco's Santa Parade which was the Friday after Thanksgiving. Big Bird proclaimed to

all bystanders that they should "Follow That Bird To The Elma Centennial!"

Centennial quilts were made by a group of ladies. The young men not to be outdone, painted road signs advertising our centennial. These signs were placed along the roads and also on the sides of trucks. Those who helped with this were: Neil Thiele, David Schroeder, Roger Heying, Glen Pietan, Ed Burke, Don Havlik, Mark Pietan, Tom Bilidt, and Russ O'Brien. Elma Community Club President in the early planning was Greg Gardner. He was followed by Tom Smith. Centennial Chairmen were John Lentz and Lee Moorman. John became sole chairman when Lee and his family moved in 1985.



News of Elma Centennial traveling on the side of a semi. These signs were painted by a group of young men.



Pancake breakfast in September was prepared by a group which included "Elma's Pros" Reuben Tuchek, Keith Roethler, and Orrie Thompson.



The Santa Parade float featuring "Big Bird."



In the kitchen preparing more batter were Bruce Weigel, Russ O'Donnell, Lee Moorman, Margaret O'Donnell.

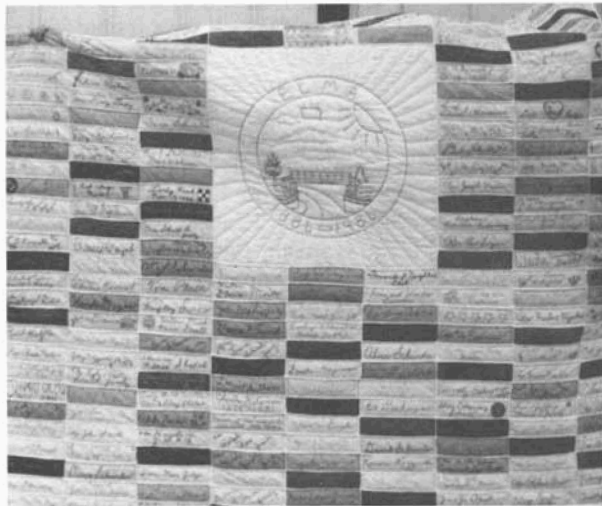


Car Show August 18, 1985, was kick-off for the Centennial and featured the balloon lift-off.

Among the fund raisers have been several dances and a pancake breakfast. Businesses and individuals have purchased pigs from Max Schmidt for the "Centennial Pig Contest." The pigs were fed and cared for on the Schmidt farm and were to be taken to the Elma Locker for the centennial feast. Persons who chose a pig also named them and tagged them for identification. A report "From the Pigpen" was placed in the Reminder each week.

Chairmen for the centennial: Medical, Dr. C. W. Rainy; Parade, Linus Lentz; Beards, Vern Voves; Raffle, Kenneth Fangman; Flea Market, Marian McGee; Publicity, Edna Schroeder; Camping, Melvin Cannon; Electricity, Darrell Knecht; Leasing, Russell Murphy; History, Donna McGrane; Food, Bob Ballantine; Beer, Ed Beecher; Advertisement, Adolph Ludwig; Fireworks, Lyle Streich; Souvenirs, Alma Schroeder; Restroom Rental, Lee Moorman; Collections, Joe Johnson; Antique Machinery, Jerome Heying, Sr.; Costumes, Chloe Dykema; Time Capsule, Bob Conway and Kenny Stevenson; Set-Up, Bob Gansen; Country Store, Cindy Ptacek; Communications, Orrie Thompson; Entertainment, Barb Havlik.

### Centennial Logo Quilt



"The Elma Centennial Logo Quilt"

The "Centennial Quilt" was designed by Mrs. Ivan (Alma) Schroeder. On January 15, 1985, Alma Schroeder, Elsie Lentz, and Mary Ann Gebel purchased the brightly-colored material at the Shopette that was used to make over 300 blocks. These blocks were sold at \$3.50 each, carefully designed and embroidered; each one depicting its own story of the family or business it represented.

The large center block with the Elma Centennial Logo was embroidered by Edna Fountain. Marie O'Donnell, Alma Schroeder and Gert Lentz helped with embroidering and many individuals volunteered to do their own. The task of sewing the blocks together was done by Marjorie Kucko and Kathleen Thiele of Powersville. Other quilters joined them for the quilting.

There had to be a million stitches and hours of work in this queen-size project and all of it was done by volunteers whose only compensation was love and pride for our town as it is celebrating its 100th birthday.

Cyril Reicks of Alta Vista, Iowa, was the lucky winner when the quilt was given away on June 29, 1985.

The ladies helping to quilt the Logo Quilt and the many other quilts that have since been completed are: Alice Peterson, Cleo Gesell, Esther Hartogh, Mary Ries, Donna Fitzgerald, Rosanna Hidding, Edna Fountain, Ardel Boyle, Marge Kucko, Alberta Friedrich, Theresa Biwer, Eleanor Gansen, Veronica Knecht, Mary Ann Gebel, Marie O'Donnell, Edna Schroeder, Marion Schroeder, Delberta Palmersheim, Freida Worple (deceased 1985), Clara Bayer, Alma Schroeder, Elsie Lentz and Gertrude Lentz.

Quilters and several of the quilts they designed and quilted.



### Elma's History House

"Elma's History House" has been occupied with clicking typewriters and stacks of pictures and notes received by chairman of the "History Book," Donna McGrane. When the pictures, scrapbooks and clippings outgrew her home, a refuge was needed that could be used at odd hours, and articles left in place at the end of the day.



"The History House"

Harold and Lucille Stapleton came to the rescue and offered the home of the late Margaret Kobliska, that they own, to be used by the committee.

The banquet-sized tables were placed around the rooms and the material laid out that was received from interested people in our community and all over the United States.

The house was occupied with workers at varying times, but not until a "shopper" was placed in the door did we realize that the house was thought to have permanent residents.

The house has an interesting history. The lots were deeded from the United States to Obidiah House in August of 1854. Obidiah House sold them to Lemuel Potter in January, 1866. Lemuel Potter to Mary Murphy in October, 1888, and remained in the Murphy family for 38 years. Mary and James Murphy sold the house to H. D. Cook in March, 1926, and in 1946 Louis and Margaret Kobliska bought the home that was to be theirs until Margaret's death. The house is now owned by Margaret's daughter and son-in-law.

A small inscription should be added to the deed of this property, "I have served the community well by housing the people who recorded Elma's History for the Centennial in 1986."



Lucille and Harold Stapleton, owners of the History House, and Kenny Stevenson, chairman of advertising and promotion.



History committee members were: Sam Kramer, Gerry Heying, Donna McGrane, Avis Roethler, Jim McGrane and seated Pat Pitz and Margaret Pierce.

### History Book Committee

The chairman for the history book was Donna McGrane. In October of 1984, the Elma Community Club appointed chairmen. Information was sought for the book through the Elma Reminder, where a column entitled, "Those Were The Days," was included each week from July of 1985. This column showed a picture and gave information and requested more history.

Several people helped for days and some for weeks with the compiling of this book. They were: Avis Roethler, Jim McGrane, Margaret Pierce, Mary Ann Gebel, Gerry Heying, and Sam Kramer. Others who gave assistance were: Cindy Ptacek, Linda Zeimetz, Linda Dundee, Marge Gansen, Pat Pitz, Carol Zobeck, Sue Murphy, Marion Schroeder, Kay Hayden, Florence Kinney and Nora Stapleton.



Gerry Heying (left) and Mary Ann Gebel discuss a family history.

Photographers were Jim Conway and Sam Kramer. Spearheading the group which sought ads were Kenneth Stevenson and Harold Stapleton.

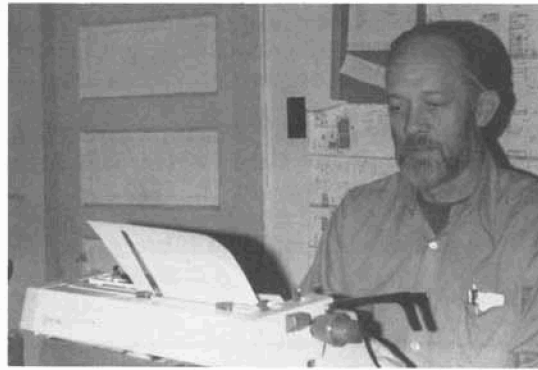
Kenny's collection of pictures and maps from Memorial Hall were a much appreciated and invaluable source of information.



Standing by one of six maps used for information are Donna McGrane and Jim McGrane. Seated are Pat Pitz, Margaret Pierce, Gerry Heying, and Avis Roethler.



Our photographer, Jim Conway.



Jim McGrane, brother-in-law of Chairman Donna McGrane, did the research work from all the New Era papers in our public library and from all the city records.

JAMES QUIRK MILLING CO.  
MINNEAPOLIS, MINN.

**Best on Record**  
FLOUR

Exclusive Agent    WM. DIEKMAN    Elma, Iowa

## BIBLIOGRAPHY

*Lenthened Shadows*, Elma Library.

*With Faith and Vision*, Schools of the Archdiocese of Dubuque 1836-1966. Rt. Rev. Msgr. Justin A. Driscoll, PhD, Bureau of Education, Archdiocese of Dubuque, 1967.

*Elma in the Hands of Time*, H. W. Bruekel. Published by the *Jerico Echo*, New Hampton, Iowa.

*Centennial History of the Archdiocese of Dubuque*, Rev. M. M. Hoffman. Imprimatur: Most Rev. Francis J. L. Beckman, S.T.D., Archbishop of Dubuque, Columbia College Press, Dubuque, IA, July 10, 1937.

*Illustrated Historical Atlas of the State of Iowa*, A. T. Andreas. Published: Lakeside Building, Chicago, IL, 1875, Andreas Atlas Company.

*History of Chickasaw and Howard Counties, Iowa*, Volume I and II, Robert Herd Fairbairn. S. J. Clarke Publishing Company, Chicago, IL, 1919.

*Elma New Era* newspapers, Elma Library

*Elma Reminders*

## Donations

### AMERICAN LEGION

ELMA, IOWA ..... \$673.00

### SERENDIPITY SHOP

NEW HAMPTON, IOWA ..... \$5.00

### DOCTOR ABNER BURESH

LIME SPRINGS, IOWA ..... \$5.00

### MARV & ZIPS

NEW HAMPTON, IOWA ..... \$5.00

### AGRI CAREERS INC.

NEW HAMPTON, IOWA ..... \$10.00

### DENNIS K. UTTERBACH

NEW HAMPTON ..... \$20.00

### GRAPHIC VISION

NEW HAMPTON, IOWA ..... \$10.00

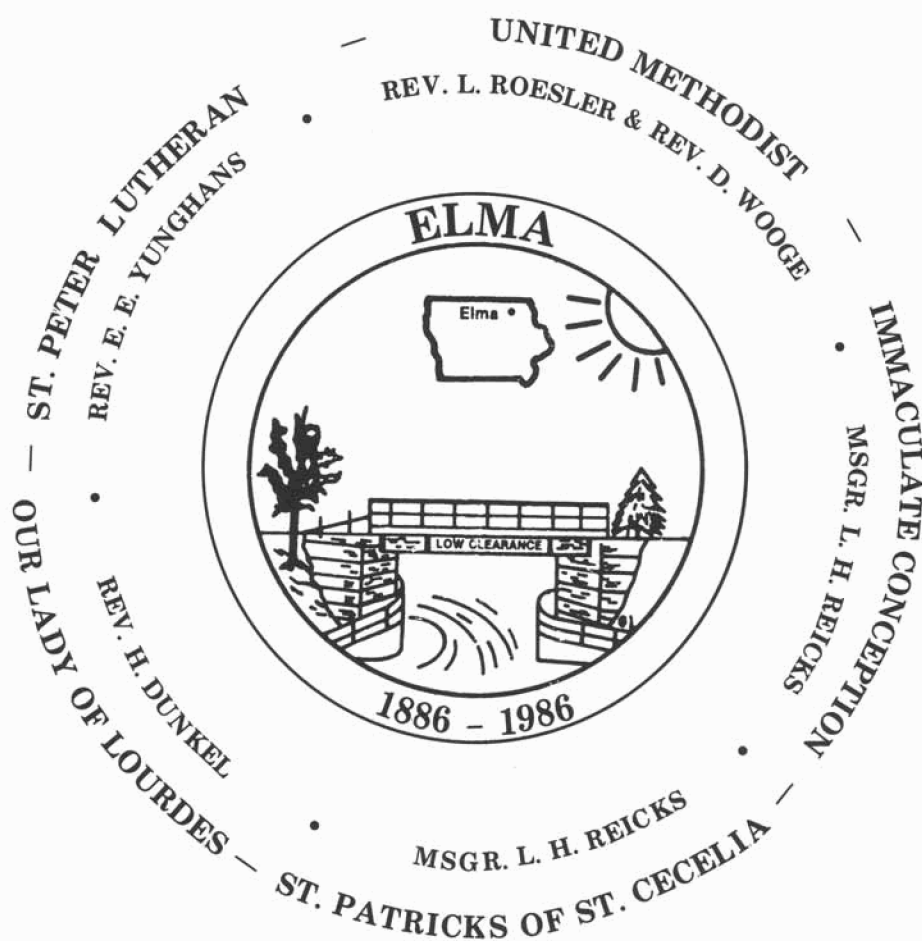
### INTERSTATE POWER

..... \$45.00

### S & S T.V. APPLIANCE

NEW HAMPTON, IOWA ..... \$10.00

**CONGRATULATIONS, ELMA,**  
on your first 100 years; from  
the following area churches:





# Lenz Implement, Inc.

Phone [515] 985-2243    Box H    Riceville, Iowa 50466



## YOUR FAMILY HEALTH CENTER

- Russell Stover Candies
  - Hallmark Cards & Candles
  - Cameras • Cosmetics
  - Sundries • Convalescent
- PRESCRIPTION DELIVERY & MAIL SERVICE  
NEW HAMPTON

WE WANT TO BE YOUR FAMILY PHARMACY

*Hallmark*    NEW HAMPTON  
394-4156

NIGHTS & SUNDAYS CALL  
JIM BENNETT AT 394-5407



## DICK EHRICH STATE FARM INS.

Car • Home • Life • Health

Cresco, Iowa



(515) 228-6262  
222 N. Main  
Charles City, Iowa 50616

Ltd.    ★ ★ ★ ★ ★  
JOHN HENRY, manager

JERRY JOERGER & NANCY JOERGER, owners

## Financial Services

220 NORTH MAIN STREET  
CHARLES CITY, IOWA 50616

- BUSINESS & FARM ACCOUNTING
- INCOME TAXES
- COMPUTER SERVICES
- BUSINESS CONSULTING

G. W. (Jerry) JOERGER

515-228-2881

## ANDY'S MINI MART

Riceville, Iowa 50466  
Phone (515) 985-2800

We have all your needs:  
Self-serve gas    Lottery tickets  
Free semi parking    Deli Bar  
Beer & pop specials    Oil & car accessories  
Groceries

HOURS 6 A.M.-11 P.M. DAILY  
**Owned & Operated by  
Tom & Steve Anderlik**

Family Owned & Operated

Head Bolt Heater Outlets

## Hart Motel

24-Hour Direct Dial Phone  
AT DOOR PARKING  
Cable T.V. — Large Rooms  
Hwy. 218 N. & 18 W.  
515  
228-4352



Charles City



Chiropractic For Health

*Kent D. Schuchmann*  
CHIROPRACTOR

Bus: [515] 985-2714    P.O. Box G  
Res: [515] 985-2042    Riceville, Iowa 50466

## Tierney Auto Service

Tune-Up and Body Repair

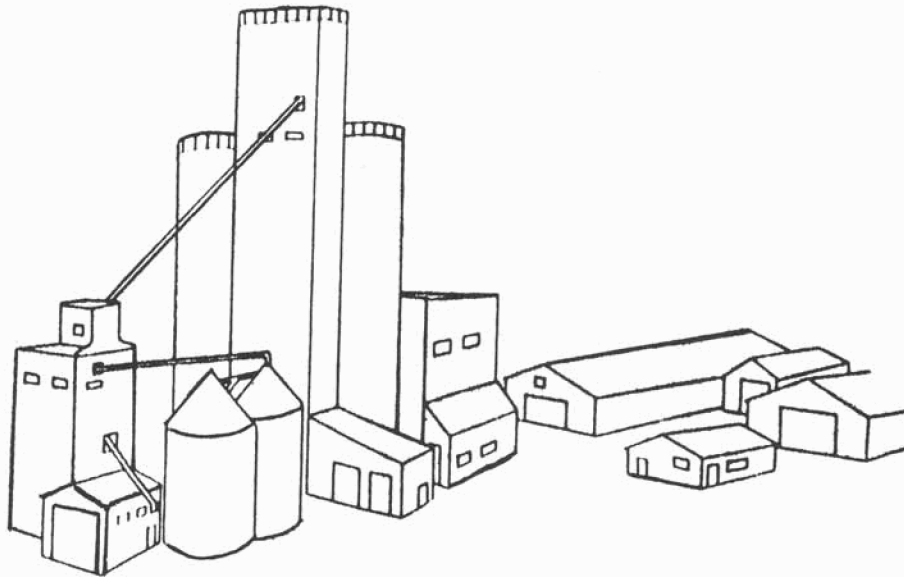
Phone 364-2635  
Alta Vista, Iowa

# HOWARD COUNTY EQUITY CO-OP ASS'N



FEED — SEED — FERTILIZER — PETROLEUM  
GRAIN BUYERS, STORAGE & DRYING

Phone: 515-393-2260  
ELMA, IOWA 50628



**Congratulations ELMA on your 100th Birthday**  
*We have been serving the ELMA area since 1918*



CONGRATULATIONS  
ELMA'S 100 YEARS



Keith and Marcia  
**CANNON TRUCKING**  
ELMA, IOWA

## *Elma Veterinary Service*

C. E. Oelberg  
A. R. Peterson

Mrs. Arlene Oelberg and Mrs. Linda Dundee, Secretaries

*Elma, IA*

*100 Years!*  
*Happy*  
*Birthday,*  
*Elma*

*Dr. & Caroline Rainy*

LYNKS SEEDS

DEALER

**Kenneth Fangman**

PHONE: 515-393-2637

R.R. 2

ELMA, IOWA 50628

**LYNKS**  
**SEEDS**

 INTERNATIONAL  
**MULTIFOODS**  
MARSHALLTOWN, IA

**Arnold's**  
**Body Shop**

Bodywork and Glass  
Replacement

**ELMA, IOWA**  
**Ph.: 393-2428**

*Serving the*  
*Elma Community*  
*for 28 Years*  
**Elma Reminder—18 Years**  
Kathy Whiting  
Official County Newspaper  
**Whiting Insurance—5 Years**  
Joe & Kathy Whiting  
Auto—Home—Farm—Commercial—Hail  
Life & Health  
**Hairport—5 Years**  
Lori Johnson — Judy Chihak  
Hair Care Styles — Tanning Center  
Video Center

**CONGRATULATIONS,  
ELMA, IOWA  
ON YOUR HUNDREDTH BIRTHDAY**

**AMERICAN LEGION  
JOHN FRAHM POST 597  
ELMA, IOWA**

**SUNNY SIDE  
CAFE**

Home of Fast Service  
and Fine Foods

ELMA, IOWA

**Zeimetz Service**

**393-2434**

Elma, Iowa

Gas, Tires, Oil, Lube, Batteries  
Full Service

**Mike & Rosie Zeimetz**

# STAPELKAMP OIL CO. INC.

221 Second Avenue S.W.  
Cresco, Iowa 52136  
Phone 319/547-2093

Bulk Delivery For Your  
Farm or Home  
Atlas Tires      Batteries  
Filters

Jobber



Products

# KUTEESHOP

CHILDREN'S SPECIALTY SHOP

Carrying quality goods  
for that special  
look in northeast Iowa

Infants, Toddlers,  
4-14 Boys and Girls

Health-Tex, Oshkosh,  
Carter's, Donmoor

547-2182      Roxanne Hughes  
CRESCO, IOWA



## CRESCO TOOL & DIE, INC.

Industrial Park  
Box 405  
Cresco, Iowa 52136

Featuring:

- Tool and Die
- Proto Type Parts
- Molds
- Custom Manufacturing

David Jacobson — Owners — Damon Kintz  
Phone 319/547-4747

## Chuck & Steve & Tom Phillips 66

Custom Exhaust Bending  
Tune-ups & Alignment  
Call Us for Dependable 24-hour  
Towing Service  
(319) 547-2660

After Hours Call

Chuck Allendick      Steve McCarville      Tom Kubik  
547-4225                      547-4991                      547-5951

Highway 9, Cresco, Iowa

## BEN FRANKLIN STORE

Cresco, Iowa  
Better Quality for Less  
Jim & Millie Briggs



Charles City

Meat Dept. 228-3365      Grocery Dept. 228-3523

## WUBBENS ELECTRIC INC.

P.O. BOX 303 / 800 NORTH MAIN

CHARLES CITY, IOWA 50616

E. C. WUBBENS  
PRESIDENT

Phone 515 228-4347

*Congratulations and  
Good Luck*

EMPLOYEE OWNED



FOOD STORES

Cedar Mall, Charles City

*Wacha*

**BARBER  
SHOP**



**JOHN J. WACHA, III — BARBER**  
319 MAIN STREET — ELMA  
*Since 1973*

**DON POTTER  
HOME SAWED LUMBER**

ELMA, IOWA  
PHONE 393-2417

**Freidhof Construction**

Building — Remodeling  
of all kinds  
Small or Large  
"Since 1962"  
FAY FREIDHOF  
Elma, Iowa  
1-515-393-2429

**L. O. Mohrfeld**

Box 58  
Amoco Products  
Phone 515-393-2408  
Elma, Iowa 50628



**Bob Elthon**  
FORD-MERCURY, INC.

Phone 515-228-1500  
1207 S. Grand Avenue  
Charles City, IA 50616



**JONES MEAT MARKET**

Phone 566-4481  
*Congratulations on your Centennial*  
Lime Springs, Iowa

**D & A Lumber**

South Edge of Charles City  
on Highway 218  
The Old Peavey Building  
515-228-3832  
Hours: Mon. thru Fri., 7 a.m.-5:30 p.m.  
Sat. 8 a.m. to 4 p.m.



MAYTAG & HOTPOINT APPLIANCES  
ELECTRICAL CONTRACTING - WIRING & SUPPLIES

Backed by over 40 years of experience.

117 N. ELM ST.  
CRESCO, IOWA

PHONE 547-3281



Sales & Rentals



Sales & Rentals

## BOEKE PHARMACY

*"Your Retail Store"*

MARTIN BOEKE, R. PH. - GARY BOEKE, R. PH.

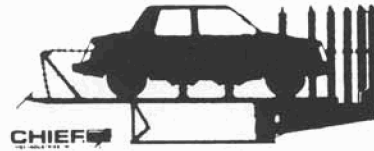
LARRY SHROYER, R. PH.

Phone 547-2641

CRESO, IOWA

## Precision Collision Repair

Chief E-Z Liner Systems



*Sonny's Body Shop*

Highway 9 East  
Cresco, Iowa 52136

Phone  
(319) 547-3317



First Interstate Bank  
of Cresco, N.A.  
Cresco, Iowa 52136

MEMBER FDIC

*"Serving You Since 1869"*

Gerald Johnson  
Licensed A.P.

Jim A. Johnson  
A.A.

G. L. JOHNSON CO.  
ACCOUNTING & INCOME TAX



HWY. 9 WEST  
CRESO, IA 52136  
PH: 319-547-2441

*Owned by Those We Serve*

## Hawkeye Tri-County

### Electric Co-op.

Cresco, Iowa

## HANSON TIRE SERVICE

Hwy. 9 West  
CRESO, IOWA 52136  
**(319) 547-2533**

## Schley Grocery

PAT & PAUL SVESTKA

Groceries • Beer • Feed • Gas

Phone 547-4298  
Cresco, Iowa



BUS. 319-547-5253  
OR 319-547-5212

*Kosters & Mohn Transportation, Inc.*

P.O. Box 274  
CRESO, IOWA 52136

MILAN MOHN  
319-547-4922

BILL KOSTERS  
319-547-2442

# GTE

## Local 120

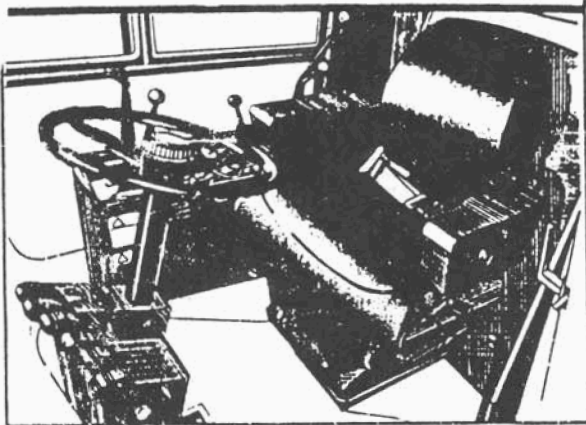


Cresco, Iowa

Local 120 of the UAW, representing the workers of the Donaldson Co. and the Feather Lite Trailer Co., wish to congratulate the fine people of Elma on their 100-year celebration.

## WHO WILL FEED US . . .

WHEN THE DRIVER'S SEAT IS EMPTY?



## SUPPORT THE AMERICAN FARMER

The nurturing hands of the American farmer has contributed much to the overall prosperity and good health of every one of us. Let's give him a hand in support and appreciation now!

**Farmers Mutual Insurance Association**

*Organized 1874*

708 Chase St., Box 148, Osage, Iowa  
732-3778

**We've enabled people to record  
their place in history since 1866.**

**Winona Monument Co., Inc.**

172-174 West Third St. Box 529 Winona, MN 55987

Phone (507) 452-4672

Over 300 authorized representatives to serve you in 22 states

**MANUFACTURERS OF**



**THREE GENERATIONS OF EXCELLENCE**



*Congratulations  
on your  
100 Years!*

**Cresco Union Savings Bank**

**Cresco, Iowa**



515-394-3185



124 West Main Street  
New Hampton, Iowa 50659

# HOINES DRUG STORE

*Congratulations to Elma,  
Iowa, on its centennial*

DISTINCTIVE SERVICE

V. HAAKENSEN, Owner  
PHONE 547-3401

CRESCO

IOWA

*CONGRATULATIONS,  
ELMA, 100 YEARS*

Local and Long Distance  
Grain and Livestock

**HAYDEN TRUCK LINE**  
Elma, Iowa 50628  
(515) 393-2320

LIME  
SPRINGS **HERALD**  
Lime Springs, Iowa

**"The Talk of the Community"**

## Cresco T.V. and Appliance

Sales & Repair

Cresco, Iowa

## D & L's Family IGA

117 Third Avenue West

Cresco, IA 52136

Phone 1-319-547-2520

DALE AND LINDA KOVARK

## CRESCO FABRICS

AILEEN HAMMEL, Owner

**CONGRATULATIONS,**

**ELMA!**

Cresco, Iowa

## FAREWAY STORES INC.

Cresco, Iowa

Open Monday through Saturday

8 A.M. — 9 P.M.

Closed Sundays

Attend the Church of Your Choice

## Grosz Hardware & Appliance

Phone 319-547-3620

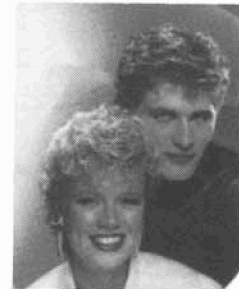
Cresco, Iowa

Phone: 985-2182

*Hinzman's*  
HAIR CARE

122 Main  
Riceville, Iowa 50466

RK and Redken Products  
Bob and Lola



## Wilshire Jewelry



Clip this Coupon for  
Free Ring Inspection  
and Cleaning

- Hummels
  - Orange Blossom
  - Precious Moments
  - Noritake
- 9 East Main                      New Hampton, Iowa

## Louie Balk Lime & Ready Mix Concrete, Inc.

P.O. BOX 428—HWY. 9 WEST

CRESCO, IOWA 52136

319-547-3221

Lime Springs, Iowa 52155

319-566-2863

# CHARLIE'S CASH GROCERY

Alta Vista, Iowa  
Phone 346-2535



Phone 319-547-2025      116 SE 2nd Ave.  
Box 117, Cresco, Iowa 52136

Advertising  
Wedding Service  
Office Supplies  
Commercial Printing

John, Boyd & Marlys Loveless



Don and Sharon Huntington  
Owners

#### PHONES

Office - [515] 985-2210      Home - [515] 985-4079

### ★ Auction Sales ★

Sale Day—Wednesday 12:00  
We Buy Market Hogs Daily  
1st & 3rd Regular & Dairy  
2nd & 4th Regular & Feeder

# Leuthold Bordwell

DEPENDABLE CLOTHES SINCE 1865

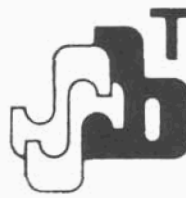
*Ladies' and Men's  
Clothing*

120 NORTH ELM  
CRESCO, IOWA 52136

STORE PHONE  
319-547-4041

## **PARK VIEW CAFE**

DEAN T. & SONIA OLLENDIECK  
CRESCO, IOWA



## **The Security**

STATE BANK

P.O. BOX 70

NEW HAMPTON, IOWA 50659

PHONE 515-394-3021

## **CORNER ROOST**

New Haven, Iowa

Good Food for Good Friends

**RUSS & BARB KRAHENBUHL**  
982-4808



## **"ALTERATIONS TO ZIPPERS"**

*We're your "Sewing Store"*

Stop in and see our line of bridal fabrics and  
custom headpieces.

HOURS:  
Monday-Saturday 9-5  
Evenings by appointment

103 S. Walnut  
New Hampton, Iowa  
394-5201  
Nancy Edgar

## **LIME SPRINGS BLDG. CTR. INC.**

Box 66  
LIME SPRINGS, IOWA 52155  
(319) 566-2281

## **Riceville Locker**

Riceville, Iowa  
COMPLETE MEAT PROCESSING  
PHONE 985-2133

## **Riceville Veterinary Service**

Dr. John Miller  
For All Your Veterinary Needs  
Phone (515) 985-2951

Customers Wanted—  
No Experience Necessary

## **Murphy's Tavern**

Judy McMaster  
Riceville, Iowa  
985-9222

## L. J. Saloon

Food & Drink  
Schley, Iowa



## Alta Vista Veterinary Service

LARGE AND SMALL ANIMAL CARE  
ANIMAL HEALTH SUPPLIES

DR. GEORGE S. FIRKINS, DVM, MS      PHONE 515-364-5891  
ALTA VISTA, IOWA 50603      ANSWERED 24 HOURS A DAY



## Hillandale Farms of Iowa, Inc

Box 106  
New Hampton, Iowa 50659

## ANDERSEN'S AGRI CENTER LTD.



"SERVING AGRICULTURE  
IS OUR ONLY BUSINESS"

Alta Vista, IA 50603      Ph. (515) 364-5100

**Amana.**  
COOLING-HEATING



**PAUL'S PLUMBING & HEATING**  
AIR CONDITIONING • WIRING • REFRIGERATION  
24 HOUR SERVICE

PAUL DANZOW      (515) 732-5924  
Owner

P. O. BOX 216  
OSAGE, IOWA 50461

## A & K FEED & GRAIN COMPANY, INC.



**KENT FEEDS**  
Grain - Feed - Supplies  
Fertilizers



Harry Kitchen, President  
Dale W. Schwade, Manager

Lime Springs, IA  
(319) 566-2291

## TUSLER MOTOR CO.

OSAGE, IOWA  
PHONE 732-3666  
LIFETIME MUFFLERS  
SCOTT TUSLER

## USED CARS



IF YOU'RE SATISFIED, TELL OTHERS ..... IF NOT..... TELL US

Lifetime Mufflers  
Shocks & Brakes  
Used Cars & Trucks

Osage, Iowa  
Ph. 515-732-3666

## TOLLIVER FARM SUPPLY INC.

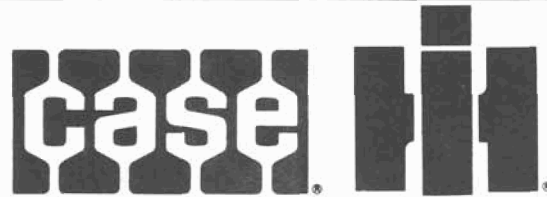
Feeds • Fertilizer • Chemicals  
Hardware

Phone (515) 364-5551  
ALTA VISTA, IOWA



NEW HOLLAND

CLET KOSHATKA  
FARM EQUIPMENT  
PROTIVIN, IOWA 52163  
PHONE 569-8636



A fresh team for today's farmer

**That's us!**  
**INGERSOLL**  
**FARM EQUIPMENT, INC.**

PHONE: 319-547-3688 • HWY. 9 WEST • CRESCO, IOWA

## DALE'S TV & Appliance

Electric Motor, radio, TV & Kelvinator Appliance



RICEVILLE, IOWA  
PHONE 985-2020  
DALE ANDERLIK



"Service and Repair"

A service charge of 1½% per month (18% annual interest) will be made on all accounts over 30 days past billing date.

## Gary Klobassa

- Professional Insurance Consultation
- Associate Real Estate Broker
- Phone (515) 364-4835 or 364-4858

## Betty's Country Salon

Complete Family Hair Styling  
Nexus and Kendra Products  
Open at *Your Convenience*

**Betty McGrane, Owner**  
R.R. 1, Box 122  
Riceville, Iowa

**For Appointments**  
Call: (515) 985-2282

## Gebel Plumbing & Heating

Alta Vista, Iowa  
Plumbing • Heating • Electrical  
Well Work  
364-2515

**NITE-LITE**  
**Alta Vista, Iowa**  
Your Favorite Drink  
and Food  
Phone 364-2625

## ALTA VISTA STATE BANK

Over 50 years  
Ph. (515) 364-2135 of service Alta Vista, Iowa 50603

"Come to this Full Service Bank  
for all your Financial Needs."  
Capital and Surplus over 2 million.  
We Invite and Appreciate  
your Business.



"A Friendly Bank In A Friendly Town"

**Petro-N-Provisions  
Convenience Store**

Snacks  
VCR Rentals  
Gas  
Groceries

*Congratulations, Elma,  
on your 1st 100 years!*

321 E. Main, New Hampton  
1101 Montgomery, Decorah  
809 Main, Osage

*Peerless*

**PHOTO FINISHING CO.  
COLOR LABORATORIES  
PROCESSING & PRINTING  
BLACK & WHITE SERVICE**

1101 FIFTH STREET  
HIGHWAY 14 WEST  
CHARLES CITY, IOWA 50616  
Phone (515) 228-1763



**BOHEMIAN  
SAVINGS BANK**

Phone: (319) 569-8470  
PROTIVIN, IOWA 52163



**The Riceville Pharmacy**

*Congratulations*  
to  
*Elma on your Centennial*

Call 985-4114 for Prescriptions  
Cards and Gifts



**CONGRATULATIONS  
ON YOUR 100 YEARS**

**BURKE  
REAL ESTATE**

Cresco, Iowa



**Vrzak Real Estate, Inc.**

3 E. MAIN  
NEW HAMPTON, IOWA 50659  
515-394-3126



HAZEL COCHRAN, SEC.

OVER 60 YEARS EXPERIENCE

OUR BEST REFERENCES ARE THE 100'S OF SATISFIED  
CLIENTS WITH WHOM WE HAVE DEALT!

WALTER L. 'BUD' VRZAK

319-238-7461

WAYNE N. CAREY

409-856-5112

CYRIL REICKS

515-364-6552

BEN CUTSFORTH

319-238-8552

LARRY DENNER

515-394-2906

**Dungey's Furniture & Gifts**

**Dungey's Drive In**

(Across from East Park)

**New Hampton, IA**

*A Proud Supporter of This*

*Area for 30 Years*

*1956-1986*

**New Hampton  
Economist & Tribune**

New Hampton, IA 50659  
515-394-2111

**L. A. Dedic, D.D.S.**

26 N. Chestnut  
New Hampton, IA 50659  
515-394-3112

**W. E. Tunnell, O.D.  
R. F. Uglum, O.D., P.C.  
Optometrists**

Fashion Eyewear  
No Line Bifocals & Trifocals  
Extended Wear Contact Lenses—Tinted Lenses

New Hampton, IA 50659  
515-394-2326

**Riley's Inc.**

Office Furniture  
& Equipment Dealer  
Phone 515-394-2180  
New Hampton, IA 50659

**New Hampton Area  
Chamber of Commerce  
Salutes**

The fine city of Elma  
on your  
Centennial Celebration

*"We're proud to  
be your neighbor"*

*Congratulations, Elma  
on your 100 years!*

**INTERSTATE POWER CO.**

# *First State Bank*



Lock Box F  
109 Woodland Avenue  
Riceville, Iowa 50466-0506

Phone (515) 985-2442

## **FARMERS MILL INC.**

Grain • Feed • Seed • Fertilizer

HAPPY 100 YEARS

**BILL MEIRICK**  
Protivin, Iowa